



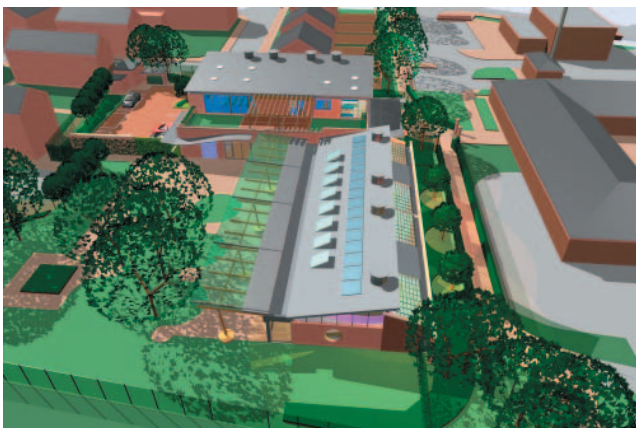
Scape

Early Years Centre, Nottingham

Nottingham City Council are using the Scape/Willmott Dixon Framework to procure a new Early Years Centre in Radford, Nottingham.



A turf cutting ceremony was held on Thursday 19 July when children from the three local nurseries helped to cut the first turf for the new building. The ceremony marked the beginning of the £3 million purpose-built centre which will serve the whole of the city providing places for 100 children aged between 0-5 years.



The new centre will also incorporate a centre for research and development in early years practice and training for up to 50 early years practitioners across the city. A 30 place foundation unit for Radford Primary School will be integrated into the new centre.

The building will contain a number of sustainable features such as a rainwater harvesting system, photovoltaic panels for the generation of electricity and solar panels for heating water. Work should be completed for September 2008.

Headlines

July 2007

Framework One

Scape's Framework One was developed to provide public sector organisations and educational establishments with an efficient and economic method of procurement for construction projects with individual phases valued up to £20m.

Scape, a Local Authority controlled company and Central Procurement Body appointed Willmott Dixon Construction in accordance with the EU Procurement Directive. Projects carried out under the Framework satisfy the Directive's requirements and will not need a further tender exercise.

The framework can be used with or without Scape's Technology.

Key Benefits are:

- Willmott Dixon are able to advise the professional team on costs and programming at an early stage.
- Procurement costs are reduced and pre-contract lead in times reduced.
- Willmott Dixon will prepare a feasibility study based on the customer's sketch scheme proposal at risk basis – no cost to the customer.
- Increased programme and price certainty
- Opportunity to take advantage of economies of scale flowing from a large (£140m) programme of work.
- Support from Scape to facilitate the use of the Framework.
- Strategic property review consultancy available.
- Opportunity to work with a contractor with a national reputation for excellence.

Many organisations are showing an interest in the framework, some of which are almost ready to sign on the 'dotted line'.

Walsall MBC's Mary Elliott SEN School is already on site.

To find out how Scape's Framework One can benefit your project please contact :-

David Mackness at Scape
Tel: 0115 958 3200
Email : DavidM@scapebuild.co.uk

or

Mark Holland at Willmott Dixon
Tel: 01675 467666
Email: Mark.Holland@Willmott Dixon.co.uk