



Scape

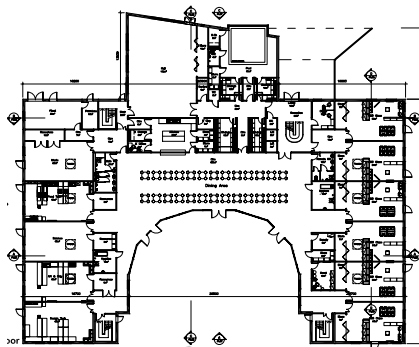
Mary Elliot SEN School, Walsall Council

Mary Elliot School is a new replacement SEN school for Walsall Council. It was procured through the Scape Framework with Willmott Dixon in September 2006. The Scape Technology building system was used to ensure that the design was progressed very quickly and the completion date of September 2008 was achieved.



Willmott Dixon appointed the project architects, Hunters, who are specialists in the design of SEN schools, supported by the Scape technical team.

The building is two storey, with a horseshoe shaped plan which ensures efficiency in terms of building area and circulation distances and gives the whole facility a sense of unity.



It also means that the building surrounds an external play/learning resource courtyard area and looks out to an unspoilt lake beyond.



Case Study

The accommodation contains all the elements required for a 21st century secondary school SEN facility with a large, multi-purpose hall, hydrotherapy pool, extensive resource areas and specifically furnished teaching spaces.

The large free spans provided by the Scape steel frame will allow the layout to evolve as future requirements change.



Natural ventilation is used for the majority of spaces through the use of window openings and passive ventilation chimney stacks. Extensive window areas (often floor to ceiling) and rooflights provide high levels of natural daylight. Under floor heating is provided throughout.



A particular feature of the building, designed by students of the school, is the panel of individually sculpted bricks adjacent to the main entrance.