



# Scape

## Derbyshire Primary School

Derbyshire County Council has recently commissioned Scape technology for a 1360m<sup>2</sup> single storey primary school. The new building will replace an existing school but on a new site.

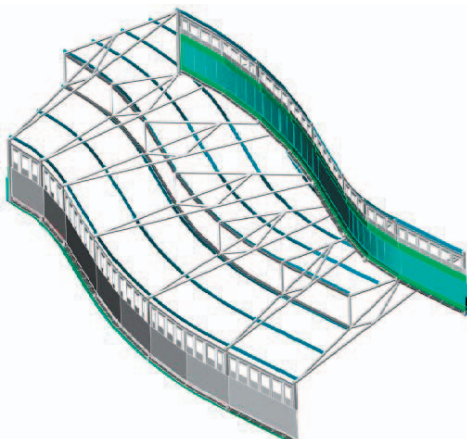
The project is intended to be a 'Flagship' for sustainable building with on site energy generation and energy conservation features such as high insulation levels and rainwater recycling.



The Scape frame provides a predominately column free interior which will allow future changes to the internal wall arrangement. The external wall will use prefabricated insulated panels provided by Kingspan and Kawneer windows. The wall finishes are acrylic render and rainscreen panelling.

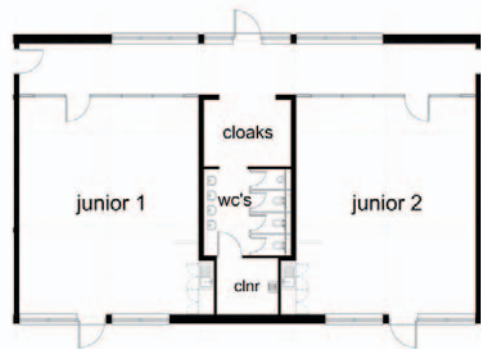
## Curved Frame

The building will be the first to use the newly developed Scape 'curved module' which gives the plan its distinctive 'S' shape. The steel frame will be curved with external wall panels and the windows faceted. The external wall finish however will follow a true curve.



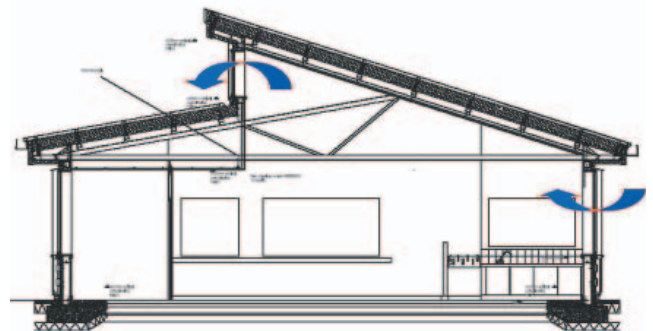
# Case Study

## Flexible Teaching Spaces



The arrangement of classrooms follows the model established at the Mundy School, with the flexible wall located in the additional 'corridor' position.

## Natural Cross Ventilation



The natural ventilation strategy relies on low level and clerestory window openings to take advantage of cross and stack ventilation. The heating, supplied by ground source pipework, is underfloor throughout which frees up the wall elevations. The building is set on a slope which will be extensively landscaped with play areas, ecological resource areas and trees.

