



IT ALL ADDS UP +

---

TO LESS THAN

**ZERO**

---

Zero carbon performance  
made easy for Local Authorities

**SCAPE ZERO**

**LEAN + CLEAN + GREEN**

**= CARBON NEGATIVE**

Scape offers Local Authorities an easy way to provide zero carbon performance. By using the Scape Zero approach, school buildings can actually deliver a negative carbon balance.

**LEAN**

The entire fabric of the school building is designed to be as efficient as possible. That means natural ventilation, maximum daylight and optimum insulation.

**+ CLEAN**

Every item of equipment is selected to maximise energy efficiency – from the construction materials to the lighting, heating and electrical equipment.

**+ GREEN**

Replacing the energy used throughout the school building with energy supplied from renewable sources ensures carbon negative performance.

**= CARBON NEGATIVE**

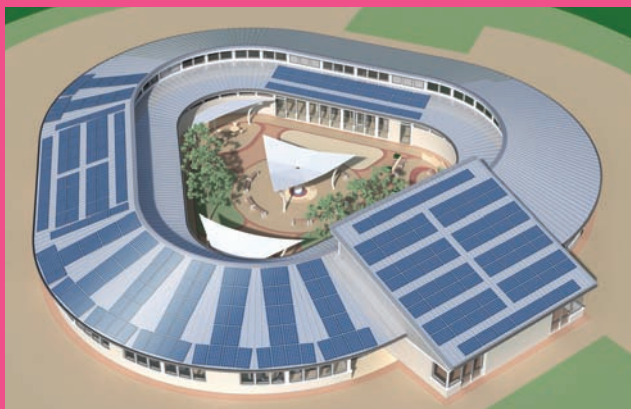
Every Scape Zero school building contributes energy – either by transferring heat to adjacent buildings or supplying power to the National Grid.

## PEBBLE

Primary School

1%  
CARBON  
NEGATIVE

A 210 place, single storey primary school making good use of natural daylight and ventilation. The construction is highly insulated and airtight. There is a fully enclosed, landscaped courtyard.



|                                    |  |                  |
|------------------------------------|--|------------------|
| + Daylight/Temperature/Ventilation |  | <b>Excellent</b> |
| + Electrical Consumption           | 36 kWh/m <sup>2</sup> /year                          | <b>Very Low</b>  |
| + Heating/Hot Water Consumption    | 61 kWh/m <sup>2</sup> /year                          | <b>Low</b>       |
| = Annual Carbon Balance            | <b>Carbon Negative</b> (268kg CO <sub>2</sub> /year) |                  |



Gross Internal Area = 1310m<sup>2</sup> Build Cost = £3.1 million

## DEVELOP

Primary School

**10%**  
**CARBON  
NEGATIVE**

A 420 place, single storey, twin linear block primary school offering a flexible learning space at its heart. The cross section of the teaching areas provides high levels of natural daylight and ventilation.

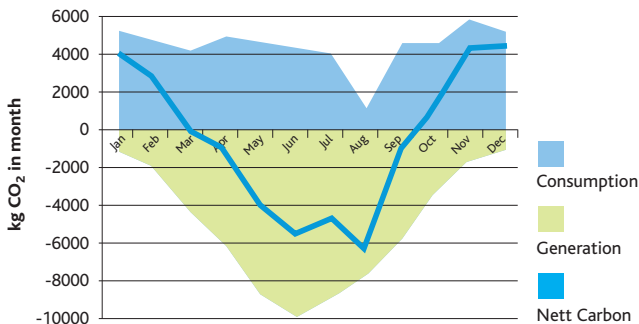


+ Daylight/Temperature/Ventilation **Excellent**

+ Electrical Consumption 35 kWh/m<sup>2</sup>/year **Very Low**

+ Heating/Hot Water Consumption 70 kWh/m<sup>2</sup>/year **Low**

= Annual Carbon Balance **Carbon Negative** (5260kg CO<sub>2</sub>/year)



Gross Internal Area = 2204m<sup>2</sup> Build Cost = £4.6 million

# FACULTY

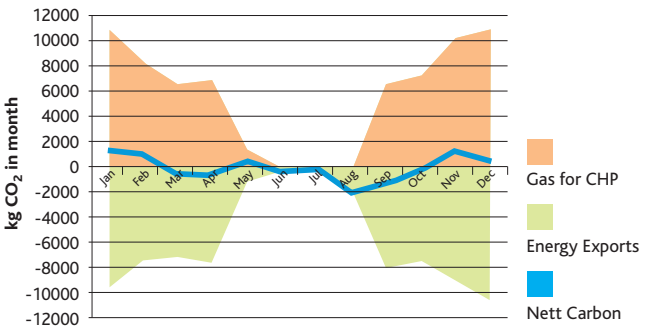
Secondary School



A highly flexible, three storey secondary school teaching block enabling natural daylight and ventilation throughout. This building will export heat and power to adjacent buildings, reducing their carbon footprint.



- + Daylight/Temperature/Ventilation **Excellent**
- + Electrical Consumption 25 kWh/m<sup>2</sup>/year **Very Low**
- + Heating/Hot Water Consumption 55 kWh/m<sup>2</sup>/year **Very Low**
- = Annual Carbon Balance **Carbon Negative** (926kg CO<sub>2</sub>/year)



Gross Internal Area = 2265m<sup>2</sup> Build Cost = £4.3 million



## Improving on zero carbon performance, Scape's schools are actually carbon negative

### IN CONSTRUCTION

Integrated architectural and engineering design, use of highly insulating materials and renewable energy ensures carbon negative performance.

### IN EQUIPMENT

Scape Technology uses the most energy efficient heating, lighting, electrical and catering equipment.

### IN USE

After handover, Scape interrogate where energy is actually being used to ensure energy efficiency is further optimised.

Scape wish to acknowledge the contribution made by the EMDA Grant for Research and Development to the Scape Zero work.

**Scape System Build Ltd**  
4th Floor Pearl House  
5 Friar Lane Nottingham NG1 6BT

T: (0115) 958 3200 | F: (0115) 958 3232  
E: [tomrt@scapebuild.co.uk](mailto:tomrt@scapebuild.co.uk)

[www.scapebuild.co.uk](http://www.scapebuild.co.uk)