



## PLANNING GUIDE

There are some simple rules regarding arranging the building in plan and section

In plan, the grid is 1.8m but columns & beams are generally arranged at 3.6m centres. For the external walls, the outer face is generally offset 220mm from the gridline. The inner lining is offset 100mm from the gridline.

- Standard modules are encouraged for external windows and doors which greatly simplifies the design.
- Internal walls should co-ordinate with the window mullion positions but otherwise can be freely located.
- Standard staircases can be slotted into the layout. Liftshafts are designed as a bespoke item and usually slot into a 3.6m zone.

In elevation, the modules for the cladding (brickwork/Kingspan panels) co-ordinate with the structural module. Cladding junctions should be carefully located. There is an inherent discipline to the external wall but also a lot of potential for customisation.

In section, there are standardised floor-to-floor and services zone heights. These can be varied but this may cause significant knock-on effects.

**The diagrams on the following pages demonstrate how to plan your project using the Scape grid. Select next page from the right hand panel to move through this guide.**

Planning Guide

Drawings

Specification

Structure

Economics

Next Page .....



Planning Guide

Drawings

Specification

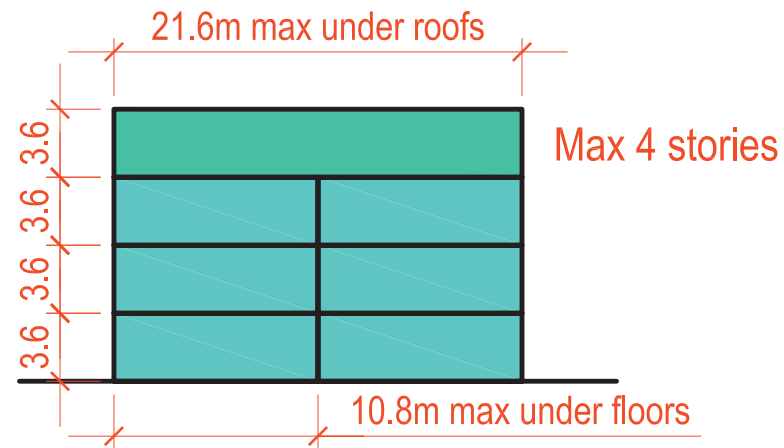
Structure

Economics

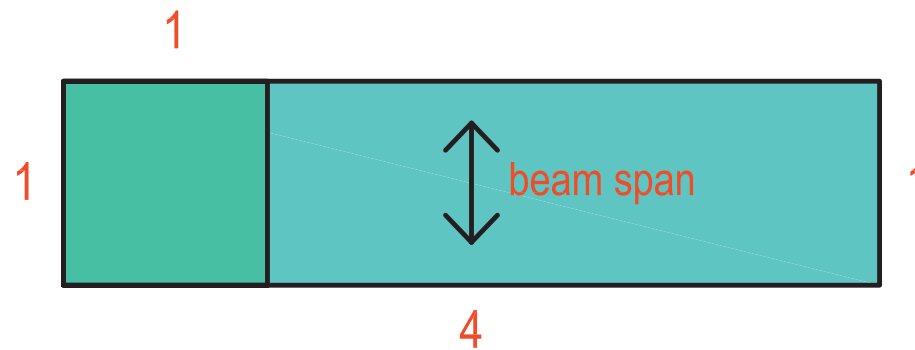
Next Page .....

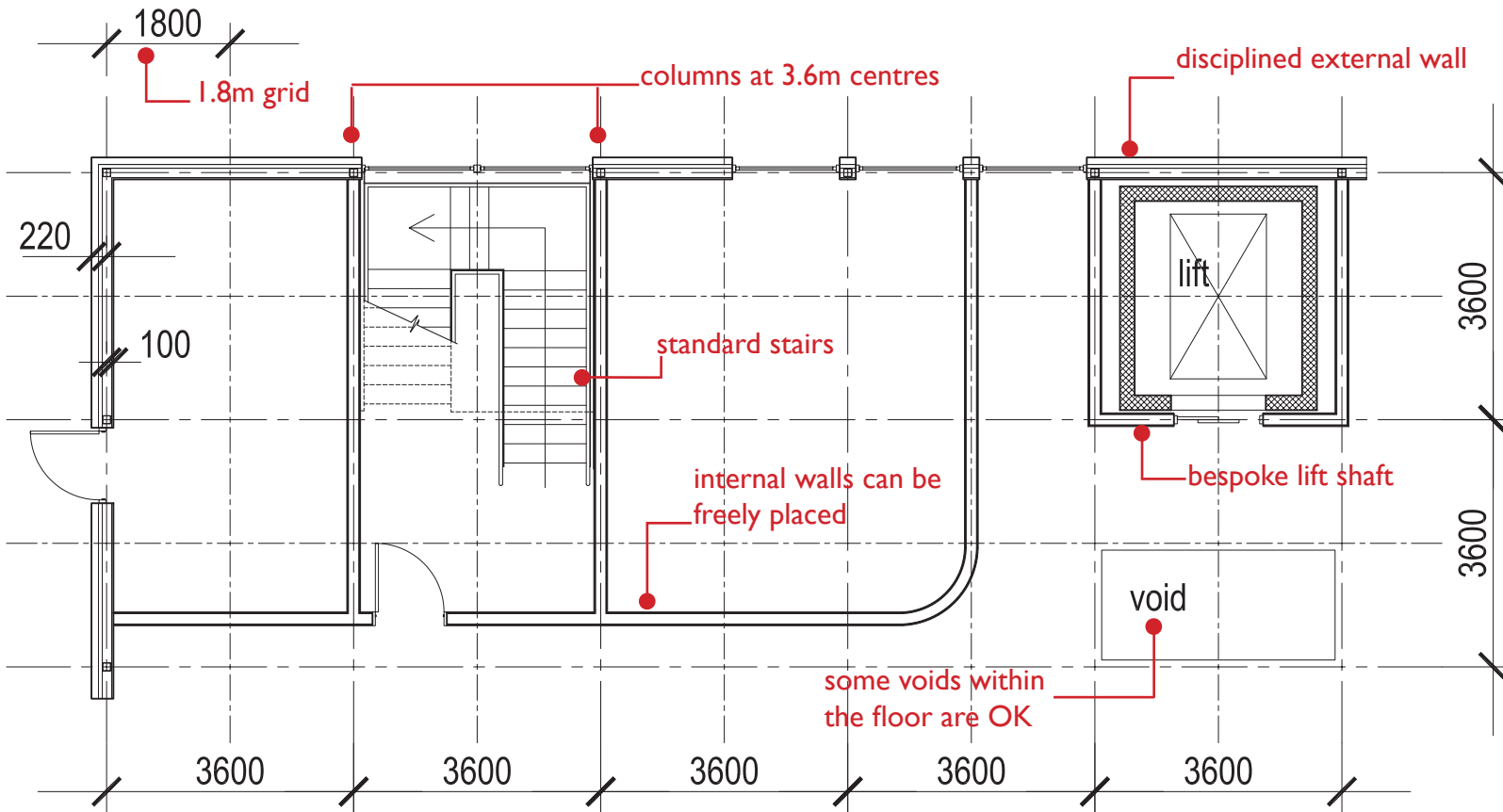
..... Prev Page

## Key span dimensions



## Plan proportions 1:1 to 1:4





Planning Guide

Drawings

Specification

Structure

Economics

Next Page .....

..... Prev Page



# Scape Technology - Design Guide



Planning Guide

Drawings

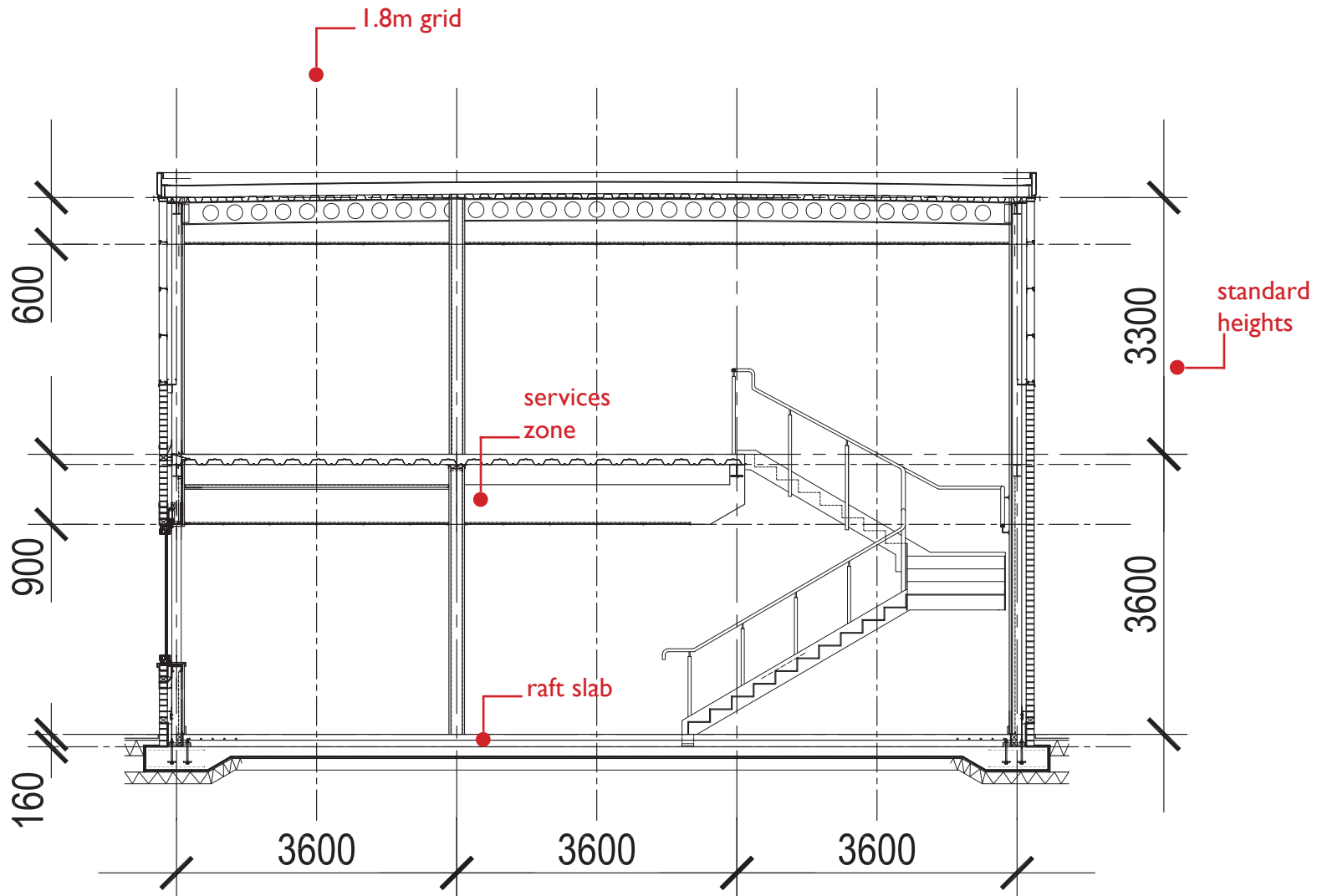
Specification

Structure

Economics

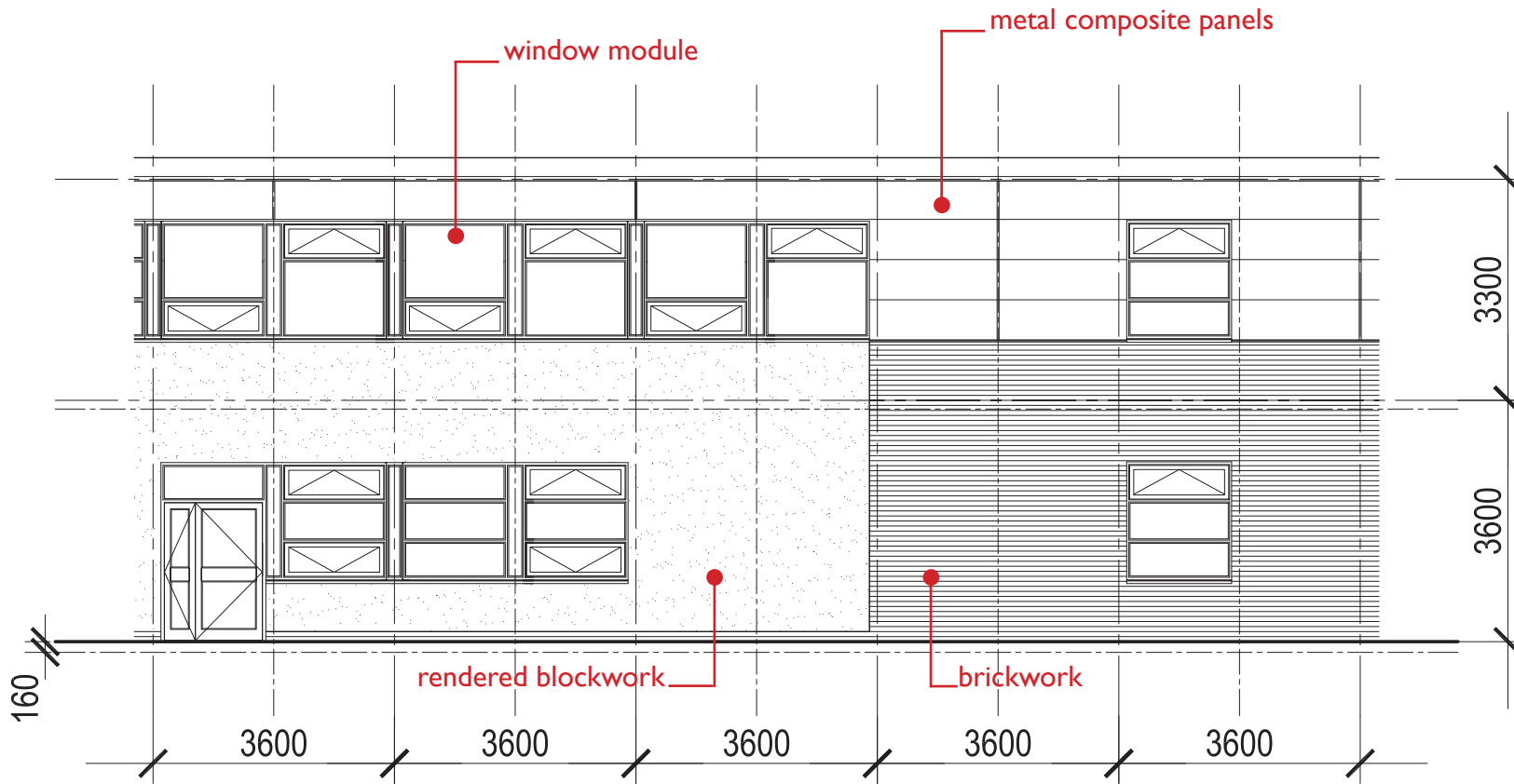
Next Page .....

..... Prev Page





# Scape Technology - Design Guide



[Planning Guide](#)

[Drawings](#)

[Specification](#)

[Structure](#)

[Economics](#)

[Next Page .....](#)

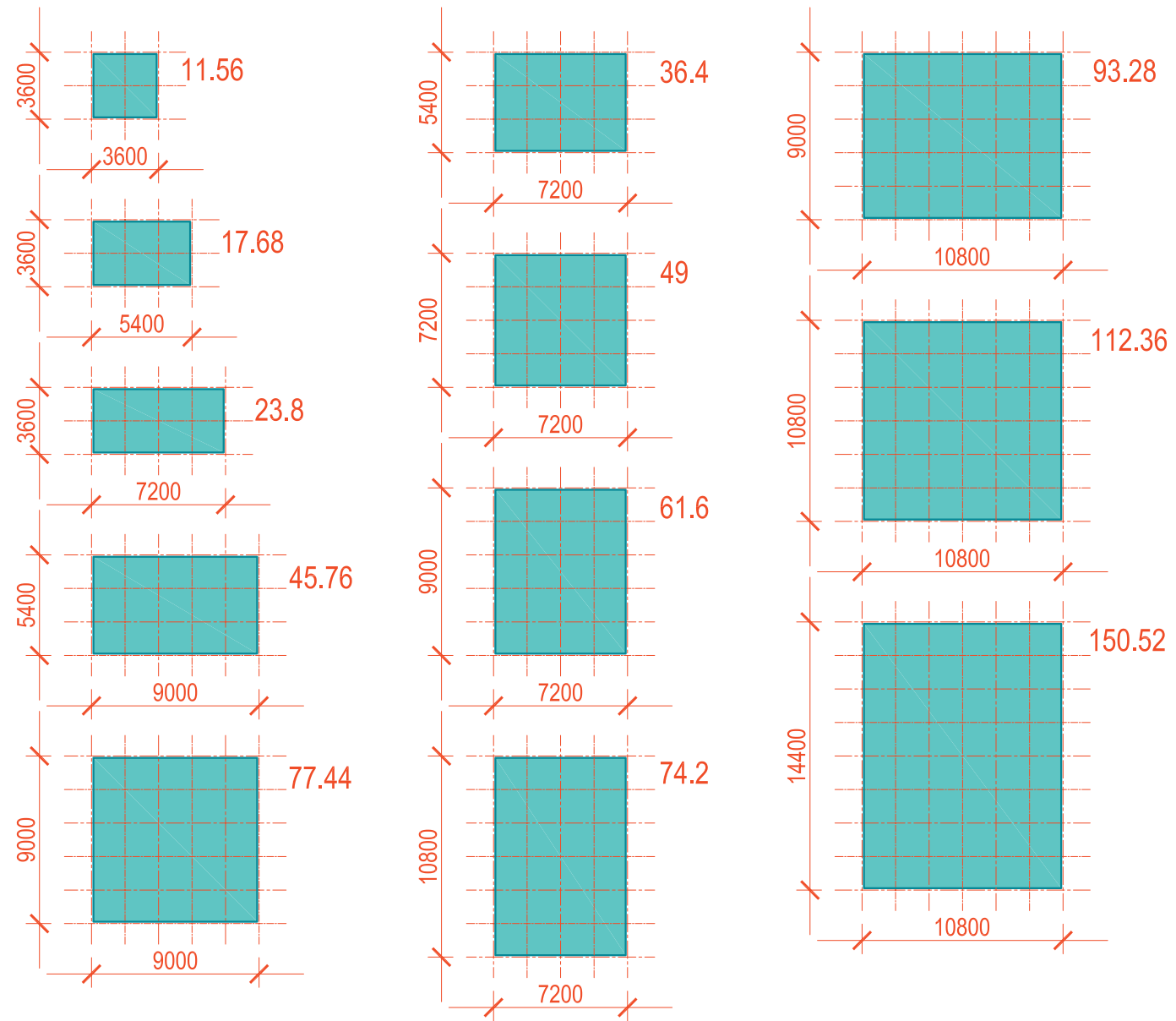
[..... Prev Page](#)



# Scape Technology - Design Guide



This diagram shows the m<sup>2</sup> areas formed from different 'module' sizes, allowing for the 100mm offset of external wall linings and external walls



[Planning Guide](#)

[Drawings](#)

[Specification](#)

[Structure](#)

[Economics](#)

[.....](#)

[..... Prev Page](#)